

More information about Peyronie's Disease

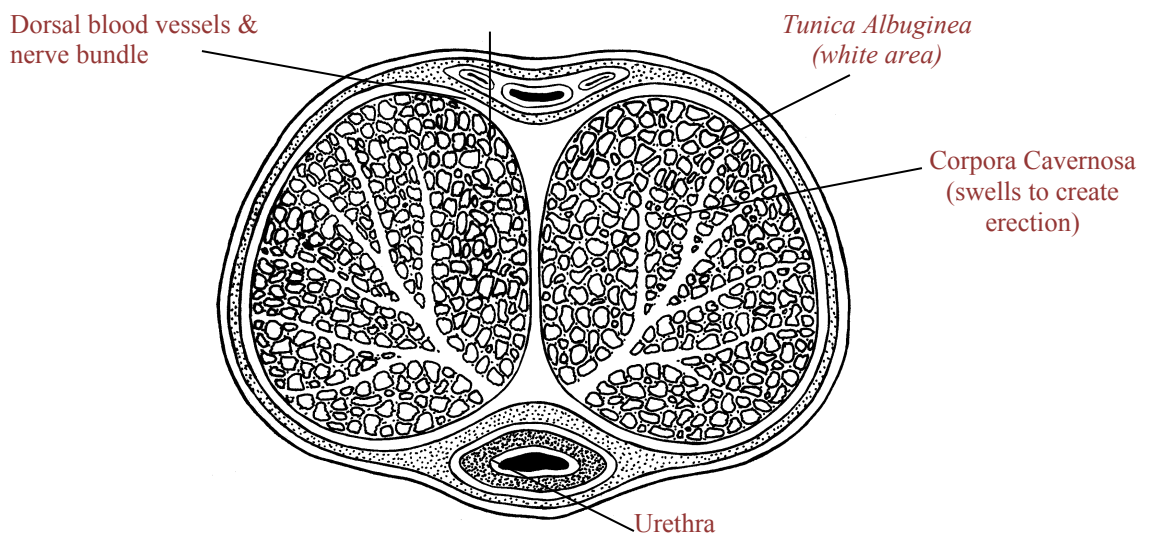
Peyronie's Disease was first identified in 1587. The disease was given its current name in 1743, by Francois Gigot de la Peyronie.



Typical Peyronie's Disease

Peyronie's Disease is the development of fibrous nodules or lumps within a tough sheath of tissue beneath the skin of the penis. This sheath is called the *tunica albuginea*. The nodules cause bending of the penis during an erection – since the tissue around the nodule cannot expand with the rest of the penis.

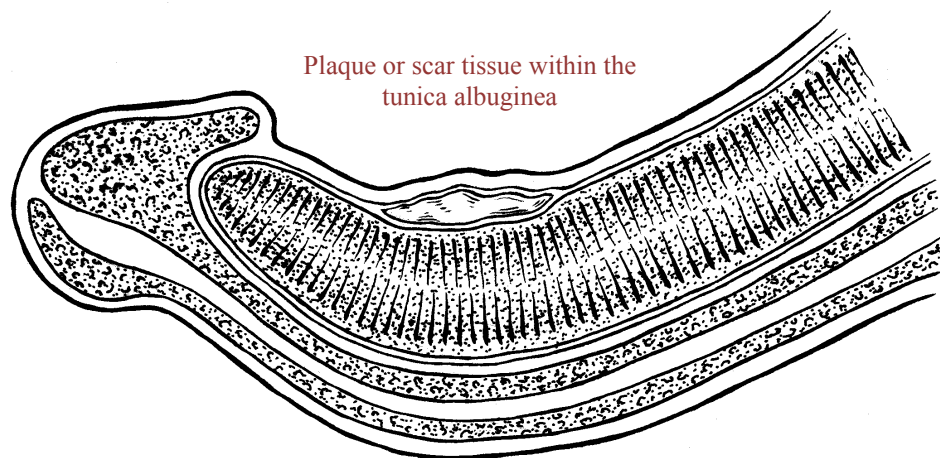
More than half the men who have Peyronie's Disease also have ED. Their experience ranges from minimal to complete dysfunction, however, experts now recognize ED as only one factor associated with the disease that is not always present.



Cross section of the penis

There is often some degree of pain associated with the early development of the disease. This often resolves itself. In a small percentage (less than 10%) of patients with the milder form of the disease, the condition may resolve itself without causing significant pain or a permanent bend. Extreme curvatures ($120^{\circ}+$ have been recorded) may be painful during erection and attempts at penetrative sex, and can make intercourse difficult or impossible depending upon the degree of curvature.

When the pain, bending, and emotional stress of Peyronie's Disease are severe enough to prevent intercourse, it usually results in sexual problems that disrupt a couple's physical and emotional relationship and lead to lowered self-esteem in the male.



Cross section showing plaque at curvature site.

Two chambers inside the penile shaft called the *corpora cavernosa*, are filled with spongy vascular tissue that fills with blood during the erection process. The fibrous lumps prevent one or both of these chambers from expanding properly, causing the penis to bend to the left, right or upwards (the most common) or downwards. The plaque itself is benign, and non-cancerous. In some cases, the plaque develops on both top and bottom, leading to indentation and shortening of the penis.